



**clubdorf**  
SEE – ISCHGL

**OUR FAMILY OFFER „HAPPY FAMILY“ ALL INCLUSIVE PLUS SILVRETTA CARD**  
for two adults with one child (up to 14,9 years) from June 15<sup>th</sup> until September 2014



7 nights in a cosy family room and 3/4 board arrangement at Hotel Tirolerhof, Hotel Astoria or one of our apartments. All rooms are equipped with shower/WC, hair dryer, telephone, satellite TV and most of them have a balcony.



4-course-dinner incl. salad bar and tasty kids menu every evening in our spacious dining halls or the cosy Tiroler Stuben. We are happy to serve vegetarian or glutenfree meals, just let us know.



Welcome to the Clubdorf See near Ischgl. Have a **welcome drink** and find out everything you need to know about your stay.



Please don't hesitate to ask for more if you still feel hungry – have as many seconds as you like!

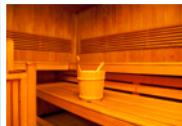


Start your day with a hearty breakfast at the **breakfast buffet** offering ham, cold cuts and cheeses, cereals, eggs from happy hens, fresh fruit and fruit salad, different types of bread and pastries, coffee, tea, milk and juices.



**Silvretta Card:** This is your ticket to use all cable cars in the area, as well as access outdoor and indoor pools, the lake, museums and more. Take part in guided themed walks, drive along the Hochalpenstraße and get involved in the family programme.

**PLUS:** Feel free to put together a packed lunch at the buffet!



Free access to our small **spa area** where you can help yourself to tea, water and fruit, every day except Saturdays from 4pm – 10pm.



**Jausenzeit!** The Austrian way of having tea in the afternoon offers tasty soups and homemade cakes. It's just what you need after a long walk or some adventures in the mountains.



**Surfing at the fireplace:** Relax in our lounge and use the **free WIFI** to let your friends know what a great time you are having.

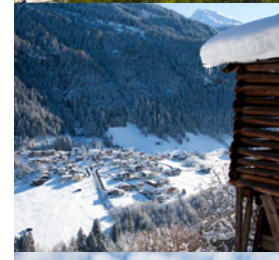


**Drinks up to 9pm.** Have soft drinks, water, coffee, house wine and draught beer for free. Spirits are not included.



**More than one?** Of course we offer discounts for your other children too. Please call us or send an inquiry.

**HAPPY FAMILY**  
1 week  
all inclusive  
+ Silvretta Card  
from **€ 997.-**  
Price incl. of VAT for 2 adults + 1 child up to 14,9 years in a family room plus resort tax (€ 1.70 pp/n). Subject to availability.







# clubdorf

SEE – ISCHGL

Welcome to the Clubdorf in See near Ischgl!

In summer See is particularly beautiful: There are countless walking paths and mountain bike trails at your feet, a lake for you to refresh yourself and top up your tan in the sunshine, cultural events, sights and more. Spend quality time with the ones you love. Your children will love the varied programme as much as you. Here is just a taste of what you can do in and around See:

## IDEAS FOR YOUR STAY BASED ON THE PROGRAMME OF THE TOURISM OFFICE



### MONDAY: FISHING AND CHILL'N'GRILL IN KAPPL

Use the cable car for free with your Silvretta card. Surcharge of € 7.00 for food

At the Sunny-Mountain adventure park teenagers from 11 to 16 years of age can test their fishing skills. The catch of the day then goes onto the barbecue to be enjoyed together. At the fishermen's hut the youngsters can chill and make friends for their week ahead. Sign up before noon on the previous day at the tourism office. Meeting point is the valley station in Kappl at 10am.



### TUESDAY: FAMILY WALK TO VERSINGALPE IN SEE

Participation and ride up in the cable car for free with your Silvretta Card

On the Versingalpe you can get a glimpse of the day to day life on an alp. Try home made yoghurt, buttermilk and the valley's very own mountain cheese. Enjoy the view while your children play with goats and rabbits at the petting zoo. No booking needed, meeting point is the pavilion in See at 9.30am. The tour takes about 4 hours. In the evening the tourism office organises a romantic lantern walk through See. Enjoy the view and majestic mountains after the sun has set.



### WEDNESDAY: VISIT TO THE HORSE FARM IN GALTÜR

A fee of € 5.00 applies

Children (4 to 10 years of age) can visit the tirolean blondes at the Haflinger farm of the Zangerle family. They will have a great time petting, currying, grooming and feeding the horses while they learn everything about horse keeping and the day to day life on the farm. There is also a creative programme with a child carer, drawing and doing handicraft work with them. Meeting point is Siggis Alpine Club at 1 pm. Please book it in advance, up to the previous day at the tourism office.



### THURSDAY: FAMILY WALK TO SCHALLER KLAMM & MEDRIGALM IN SEE

Participation and ride up in the cable car for free with your Silvretta Card

Admire the thundering waterfalls at the Schaller Klamm and then take the cable car up to the spa and health park on the Medrigalm. Freshen up your tired legs and feet at the Kneipp facilities or walk across the food-massage-path and have a sip of the crystal clear spring water at the well. There is also a sound cylinder, stone circles and more. No booking needed, meeting point is the pavilion in See at 9.30am.



### FRIDAY: VISIT TO THE CHEESE MAKERS AT WORK IN KAPPL

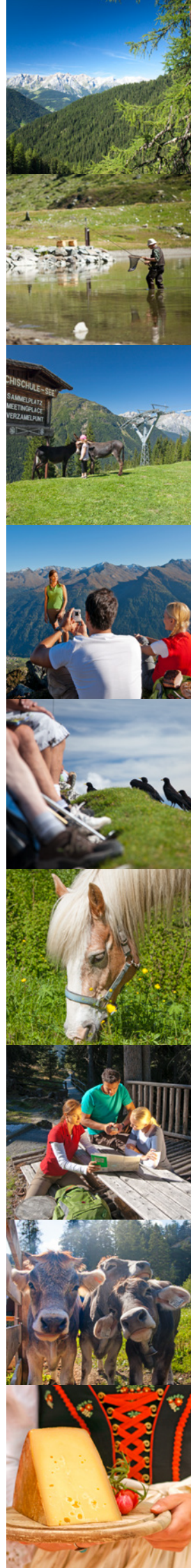
A fee of € 7.00 applies

Our cheese, the Paznauner Almkäse, is a very popular delicacy and since 2007 a proud member of the GenussRegion®. It is made from raw valley and alp milk and ages for 6 weeks. Our cows only get the best grass and hay and you will taste the difference. If you are interested to find out how it's made, pay the Senner (cheese maker) on Diasalpe a visit and get a taste of fresh cheese, butter and more. Meeting point is at Diasalpe just above the mountain station in Kappl at 9.45 am. Please book in advance, up to the previous day at the tourism office.

\*) Suggestions based on the programme of the tourism office Paznaun-Ischgl. We do not hold responsibility for its correctness. For hiking wear suitable shoes, waterproof clothing and sun protection. For the latest information and bookings contact the tourism office (T.: +43 (0)50990/400) or ask our reception staff. The outdoor programme activities are held from June 23rd until the end of Sep., the children's and youth programme until Sep. 5th.



Clubdorf Hotelbetriebs GmbH: Hotel Tirolerhof, Hotel Astoria, Apartments. Gries 113, A-6553 See, T.: +43 (0)5441/8233  
F.: +43 (0)5441/863348, email: info@clubdorf.at, Images: ©TVB Ischgl – Paznaun, null0815.at, BMLFUW/Rita Newman  
BANK DETAILS: Sparkasse Ischgl BLZ: 205 02, KTN: 0 500 002 654, IBAN: AT972050200500002654, BIC: SPIMAT21







# clubdorf

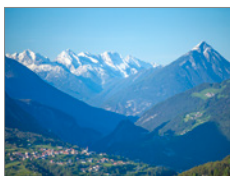
SEE – ISCHGL



### BATHING LAKE IN SEE

About 600 m from the Clubdorf, free access with your Silvretta Card

The natural lake boasts a children's area with an adventure playground, a beachvolleyball pitch, a vast lawn for sunbathing as well as docks and a floating island in the middle of the lake. Enjoy the sunshine and the refreshing clear water with the entire family. In case of bad weather there are indoor pools in Ischgl and Galtür.



### PANORAMA TOUR FERNBLICK

Easy tour, about 3 hours walking time

Start directly at the Clubdorf, following the steep and narrow street down to the M-Preis supermarket and cross the river. An idyllic footpath through the forest takes you to the hamlet Falgenair. Enjoying a fantastic view, this is the perfect spot to have a little picnic and feast on your packed lunch from the breakfast buffet. Find more tours and excursions in our Top 10.



### SUNNY-MOUNTAIN PARK IN KAPPL

About 15 km away, free acces with your Silvretta Card (excl. trampoline and Flying Fox)

On the adventure playground swings, slides, climbing trees, a tree hut and a wigwam village are awaiting you. Flaxi, the little mountain gnome will show you his world in Flaxi village near the fishing pond. There is also a herb garden and a round tour, giving you an insight on the local nature, tradition and culture. There is also a small petting zoo with lots of rabbits and piglets, ducks and mini sheep that like to be fed and groomed. On Alpe Dias you can experience the daily life on an alp.

If you are looking for even more excitement, don't miss out on the Flying Fox (on Sundays): On a zip-line you sail across the lake at 5 metres of height.







# clubdorf

SEE - ISCHGL

## SILVRETTA CARD – URLAUB À LA CARTE

With the Silvretta Card you hold all the aces for a fantastic holiday. We have listed the opening hours for the most important sights and places in PDF format on our website.



When on holiday the last thing you want to do is to watch every cent. With the Silvretta Card you will have lots of fun, action and relaxation – **for free!** And the best thing about it: You get the card even if you are only staying for one night.



Whether on two or four wheels – with the Silvretta Card you use the famous **Silvretta Hochalpenstraße** as well as other panorama routes for free. Should you travel via those routes to get here, we'll send the card in advance.



Conquer the mountains! With the Silvretta Card you can use **all lifts and cable cars** in See, Kappl, Ischgl and Galtür as often as you like. Operating hours and opening times may vary, so please ask our staff at reception for more information or check our website: [www.clubdorf.at](http://www.clubdorf.at)



If you are a motor- or MTB enthusiast, you might fancy a go on the latest machines. Visit the **High-Bike-Testcentre** in Ischgl and rent at reduced rates.



Give your car a break! Save yourself money and hassle by parking your car at the hotel and not using it for a while. From Landeck all the way to the Silvretta Stausee on the Bielerhöhe you can use **public transport** for free.



Every year the tourism office puts together a varied **programme** for the entire family. Activities range from glacier safari, family climbing and smugglers' tours to hiking and walking and other fun sports. Participation in all activities, even youth and kids club, are free with your Silvretta Card. Charges may apply for special equipment or food and drink.



Entry to the award-winning **museum Alpinarium** or the cable car museum in Ischgl is free with the Silvretta Card. Please ask our staff at reception for more information on opening hours.



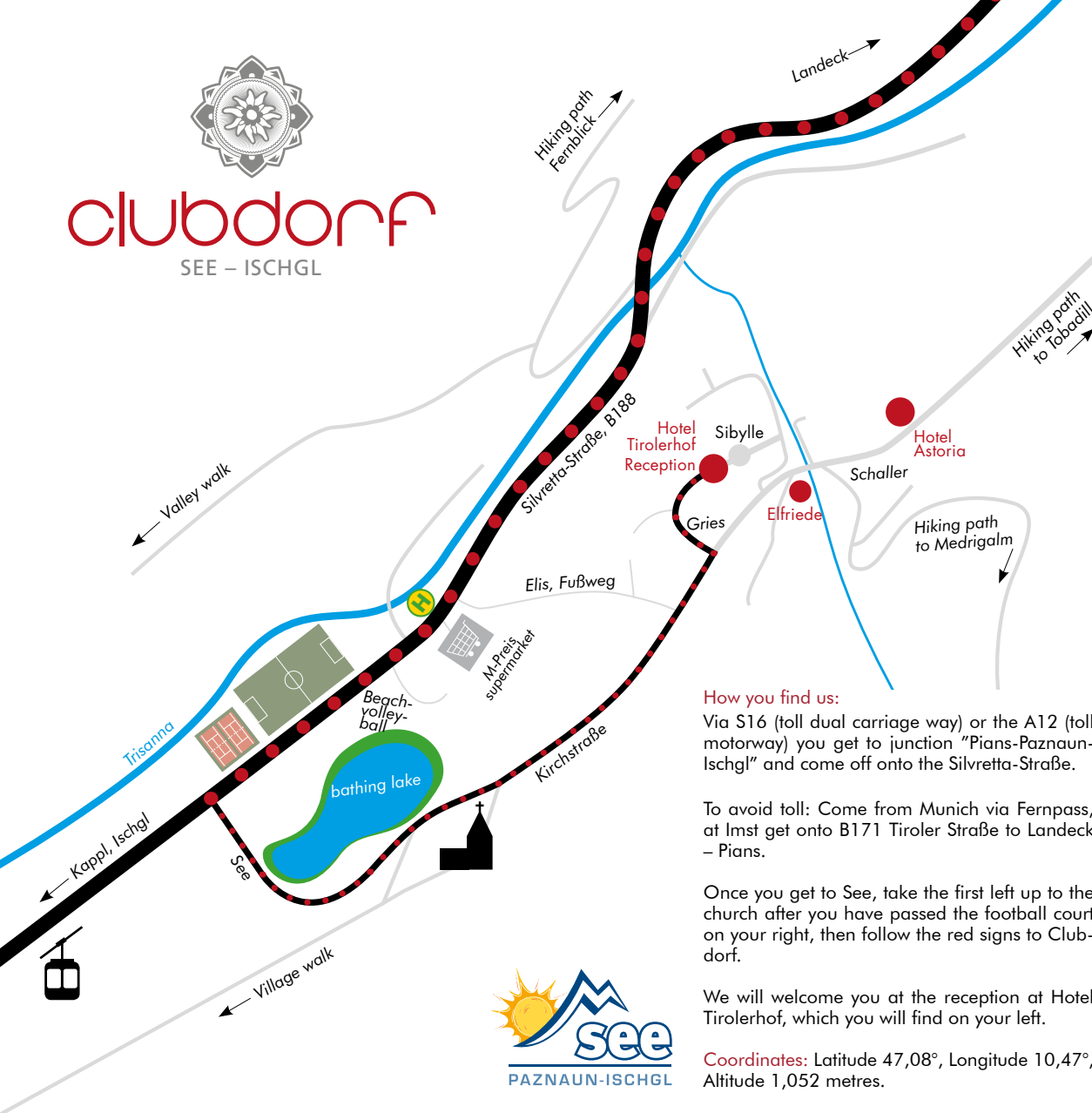
Pack your swim suit! Why not go for a swim at one of the indoor or outdoor **pools** in the Paznaun valley? Entry to the natural **bathing lake** in See is free too.







**clubdorf**  
SEE – ISCHGL



#### How you find us:

Via S16 (toll dual carriage way) or the A12 (toll motorway) you get to junction "Pians-Paznaun-Ischgl" and come off onto the Silveretta-Straße.

To avoid toll: Come from Munich via Fernpass, at Imst get onto B171 Tiroler Straße to Landeck – Pians.

Once you get to See, take the first left up to the church after you have passed the football court on your right, then follow the red signs to Clubdorf.

We will welcome you at the reception at Hotel Tirolerhof, which you will find on your left.

**Coordinates:** Latitude 47,08°, Longitude 10,47°, Altitude 1,052 metres.

#### Important information for your stay in See:

Prices inclusive of VAT, ¾ half-board arrangement and all services stated above, plus resort tax (€ 1.70 pp/n). Based on two people sharing a double room for a minimum of five nights if not stated differently. Subject to availability. **Resort Tax:** 1.70 pp/n

#### Surcharges:

Surcharge in single rooms: € 10.00/night  
Surcharge for single use of double room: € 25.00/night  
Surcharge for short time stay up to 4 nights: € 25.00/night  
Surcharge on weekends: up to € 25.00 pp/weekend

#### Children's discounts:

0 – 2,9 years of age: free  
3 – 11,9 years of age: 50% off  
12 – 14,9 years of age: 25% off

Discounts apply in family suites with two full-paying adults. Age on the day of arrival.

**Adults' discount:** 10 % off the regular price for the 3rd, 4th and 5th bed in a family room with two full-paying adults.

**Regulars' discount:** As a regular guest you get 10% off the current price.

**Group discount:** 20 full-paying guests plus 1 for free.

**Additional breakfast upon arrival:** Tuck in at our buffet for € 15.00 pp. Shower and changing rooms available. Early check-in possible upon request.

**Bed and Breakfast:** Reduces the indicated price by € 8.00 per person per night. Only available during off-peak season.

**Arrival/Departure:** Check-in time is any time after 3pm. If you arrive later than 6pm please let us know. Please vacate rooms by 10am.

**Animals:** For your four-legged family member a fee of € 10.00 applies per night (no feed included). Please be aware that animals are not allowed in the public areas of the hotel and make sure you bring a basket and a blanket. If necessary, we will charge additional cleaning costs.

**Payment:** Cash or by card (Visa and MasterCard). We can't accept cheques.

**Deposit:** 40% of the total amount when you book. Please transfer the money to our account at Sparkasse Ischgl (details below). Alternatively you can pay over the telephone by credit card (Visa and MasterCard).

**Cancellation:** No charge will be taken if you cancel or modify your booking 3 months before the date of arrival. If the cancellation or modification takes place after this time, the following fees apply: 40% of the total agreed price by 1 month before the date of arrival, 70% of the total agreed price by 1 week before the date of arrival and 90% of the total agreed price within the last week preceding the date of arrival.

**Cancellation insurance:** To avoid fees for cancellation, we recommend to contract insurance. We are happy to pass you on to our partner, the European Travel Insurance.

All offers are subject to the "2006 general terms and conditions for the hotel industry" Austria (AGBH 2006). You can find them under [https://www.wko.at/Content.Node/branchen/oe/Hotellerie/AGBH\\_englisch.pdf](https://www.wko.at/Content.Node/branchen/oe/Hotellerie/AGBH_englisch.pdf).

With publication of the information for the summer season 2014 all previous offers lose their validity. If any gaps arise in relation with the Agreement, the applicable legal provisions shall apply. We do not accept responsibility for any changes or mistakes.

**Clubdorf Hotelbetriebs GmbH:** Hotel Tirolerhof, Hotel Astoria, Apartments. Gries 113, A-6553 See, T.: +43 (0)5441 / 8233  
F.: +43 (0)5441 / 863348, email: [info@clubdorf.at](mailto:info@clubdorf.at), for more info visit: [www.clubdorf.at](http://www.clubdorf.at) or follow: [www.facebook.com/clubdorf](https://www.facebook.com/clubdorf)  
BANK DETAILS: Sparkasse Ischgl BLZ: 205 02, KTN: 0 500 002 654, IBAN: AT972050200500002654, BIC: SPIMAT21

